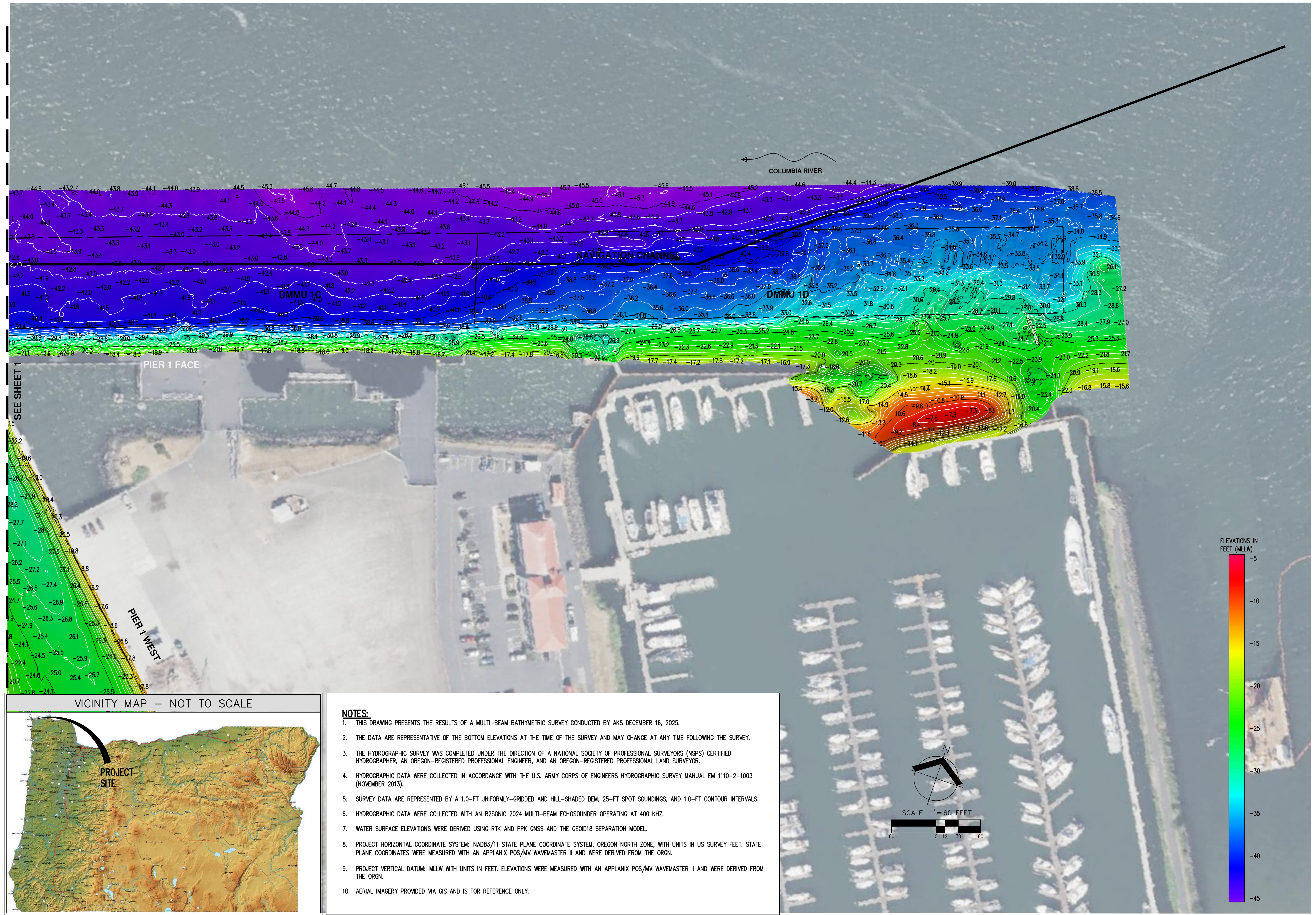


PORT OF ASTORIA
CENTRAL WATERFRONT
ASTORIA
 OREGON
 CLATSOP COUNTY
 COLUMBIA RIVER

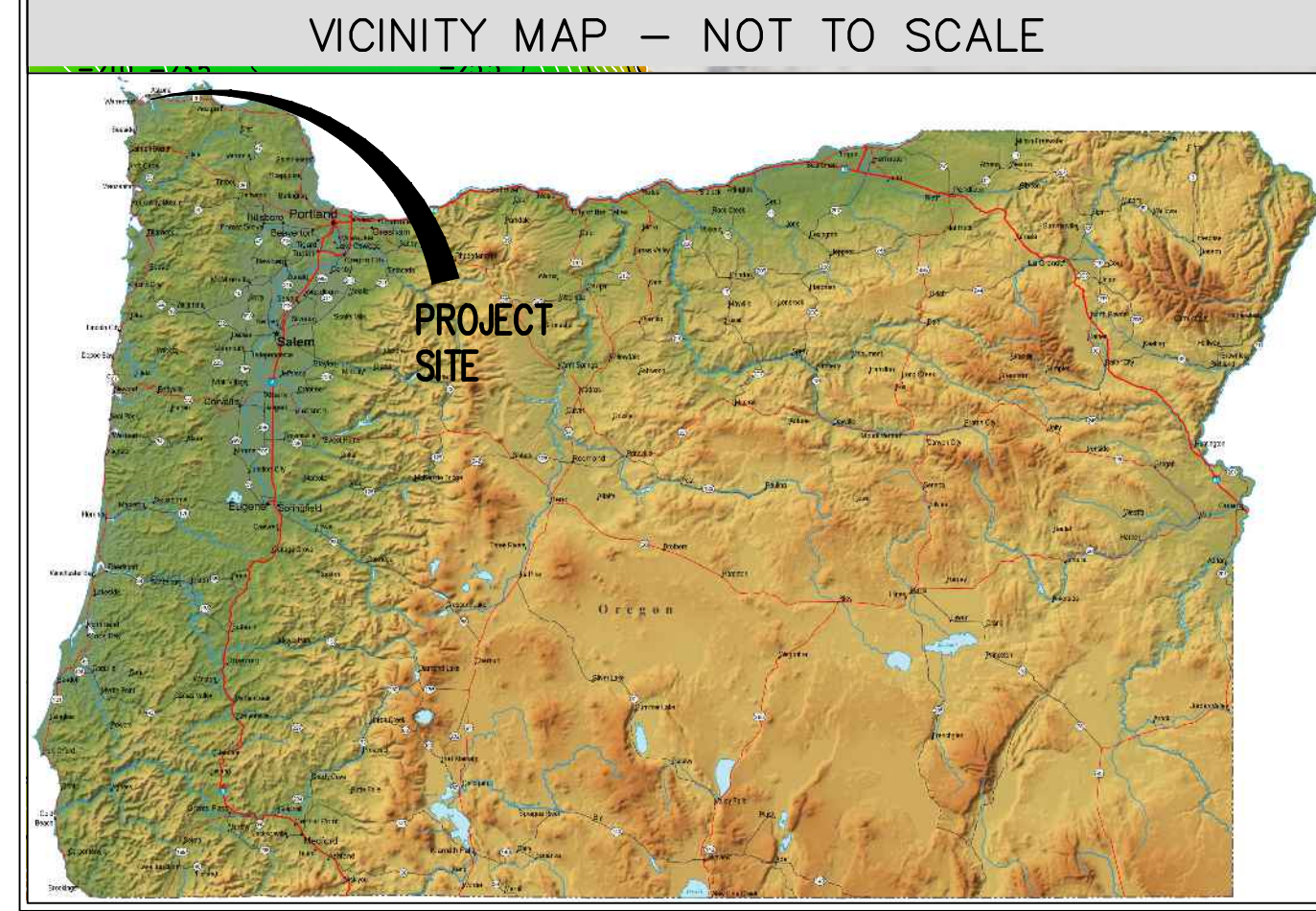
POST-DREDGE
SURVEY

DESIGNED BY: --
 DRAWN BY: NJS
 MANAGED BY: JMM
 CHECKED BY: JMM
 DATE: 12/22/2025
 REGISTERED PROFESSIONAL ENGINEER
 85773PE
 OREGON
 NOV 08, 2011
 JAYSON MATTHEW MCGLENN
 EXPIRES: 12/31/26
 REVISIONS:

JOB NUMBER
13605
 SHEET
2



SEE SHEET 1



- NOTES:**
1. THIS DRAWING PRESENTS THE RESULTS OF A MULTI-BEAM BATHYMETRIC SURVEY CONDUCTED BY AKS DECEMBER 16, 2025.
 2. THE DATA ARE REPRESENTATIVE OF THE BOTTOM ELEVATIONS AT THE TIME OF THE SURVEY AND MAY CHANGE AT ANY TIME FOLLOWING THE SURVEY.
 3. THE HYDROGRAPHIC SURVEY WAS COMPLETED UNDER THE DIRECTION OF A NATIONAL SOCIETY OF PROFESSIONAL SURVEYORS (NSPS) CERTIFIED HYDROGRAPHER, AN OREGON-REGISTERED PROFESSIONAL ENGINEER, AND AN OREGON-REGISTERED PROFESSIONAL LAND SURVEYOR.
 4. HYDROGRAPHIC DATA WERE COLLECTED IN ACCORDANCE WITH THE U.S. ARMY CORPS OF ENGINEERS HYDROGRAPHIC SURVEY MANUAL EM 1110-2-1003 (NOVEMBER 2013).
 5. SURVEY DATA ARE REPRESENTED BY A 1.0-FT UNIFORMLY-GRIDDED AND HILL-SHADED DEM, 25-FT SPOT SOUNDINGS, AND 1.0-FT CONTOUR INTERVALS.
 6. HYDROGRAPHIC DATA WERE COLLECTED WITH AN R2SONIC 2024 MULTI-BEAM ECHOSOUNDER OPERATING AT 400 KHZ.
 7. WATER SURFACE ELEVATIONS WERE DERIVED USING RTK AND PPK GNSS AND THE GEOID18 SEPARATION MODEL.
 8. PROJECT HORIZONTAL COORDINATE SYSTEM: NAD83/11 STATE PLANE COORDINATE SYSTEM, OREGON NORTH ZONE, WITH UNITS IN US SURVEY FEET. STATE PLANE COORDINATES WERE MEASURED WITH AN APPLANIX POS/MV WAVEMASTER II AND WERE DERIVED FROM THE ORGN.
 9. PROJECT VERTICAL DATUM: MLLW WITH UNITS IN FEET. ELEVATIONS WERE MEASURED WITH AN APPLANIX POS/MV WAVEMASTER II AND WERE DERIVED FROM THE ORGN.
 10. AERIAL IMAGERY PROVIDED VIA GIS AND IS FOR REFERENCE ONLY.

AKS DRAWING FILE: 13605_20251222_PORTASTORIA_POSTDREDGE.DWG | LAYOUT: PIERFACE